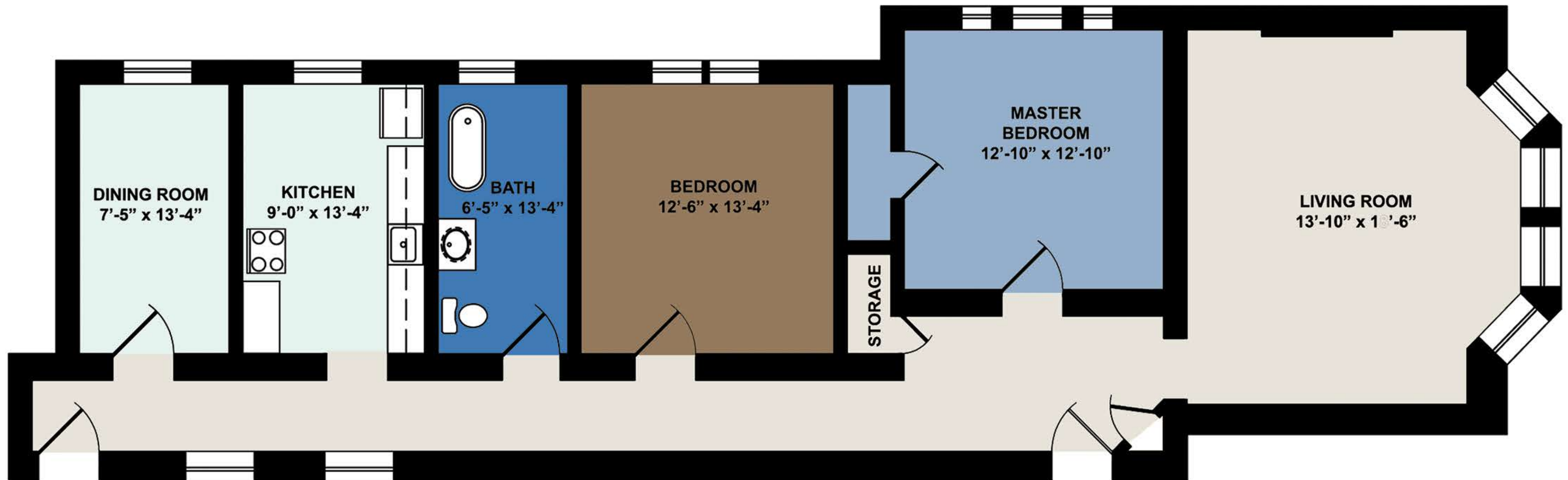


Roslyn Square

40 Osborne Street, Winnipeg, Manitoba, R3L 1X9



TYPE C
1312 sqft
2 Bedroom

- Character suite with original mouldings and ornate wood work
- Hardwood floors
- Large spacious rooms
- 9 foot 6 inch ceilings
- Ornate original fireplace
- Claw foot bath tub
- Sound proof floors, walls and ceiling
- Fridge and stove
- Views of legislative and the river