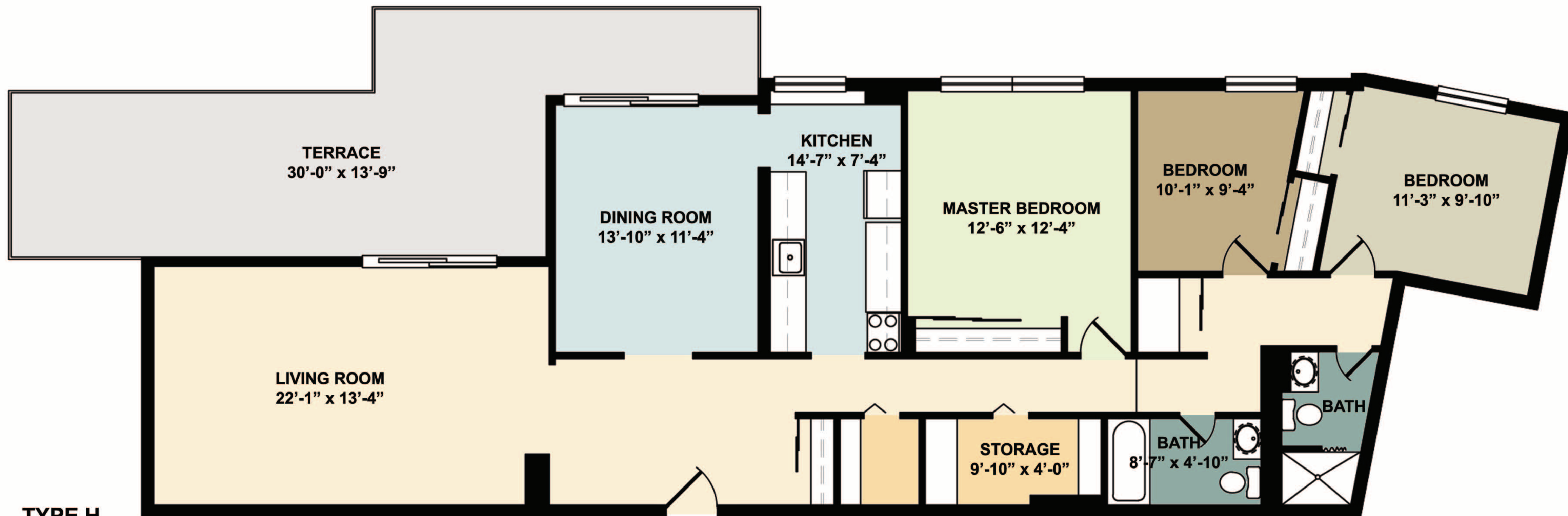


Pinewood Place

2510 Portage Avenue, Winnipeg
Leasing Office 204-832-4159



TYPE H
1,447 sqft
3 bedroom with terrace

- Large living room
- Separate dining room
- 2 bathrooms
- Ample natural light
- In suite storage
- Parquet flooring
- Large master bedroom
- Video security entrance
- Fridge and stove
- Large terrace

www.globegeneral.ca



Globe
General
Agencies