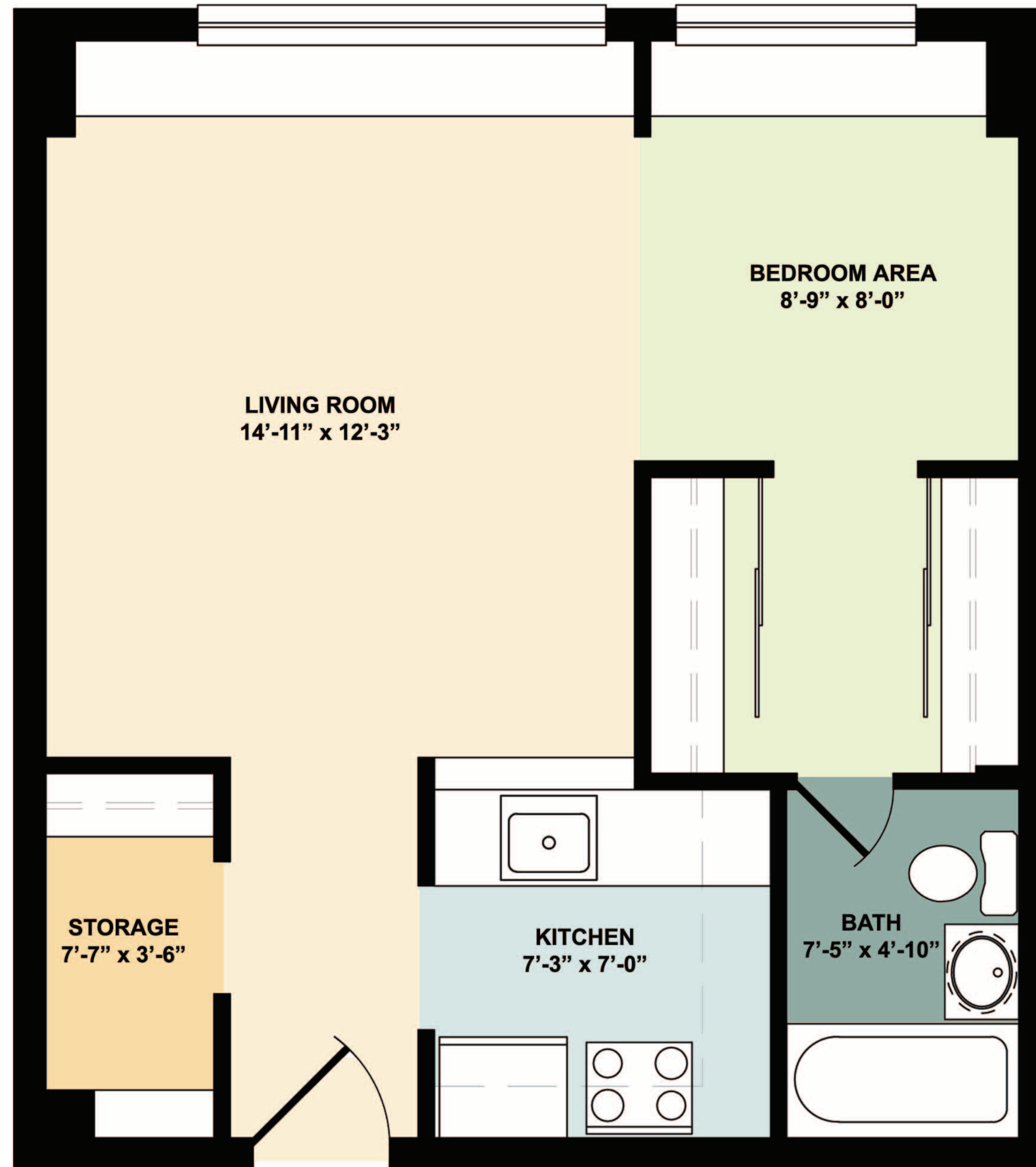


# Pinewood Place

2510 Portage Avenue, Winnipeg

**TYPE A**  
464 sqft  
Bachelor

- Open living and sleeping area with parquet flooring
- In suite storage and large closet space
- Kitchen with raised counter seating area
- Video security entrance
- Fridge and stove
- Large windows
- North or South views



[www.globegeneral.ca](http://www.globegeneral.ca)



Globe  
General  
Agencies